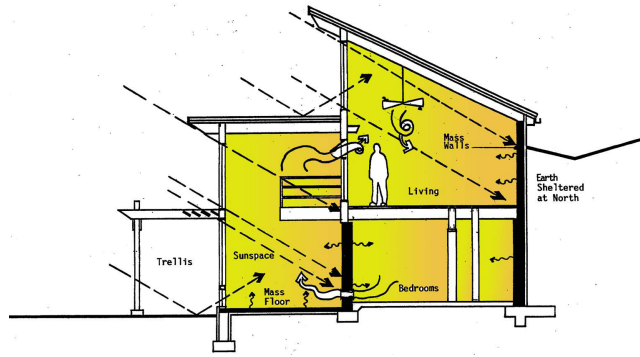
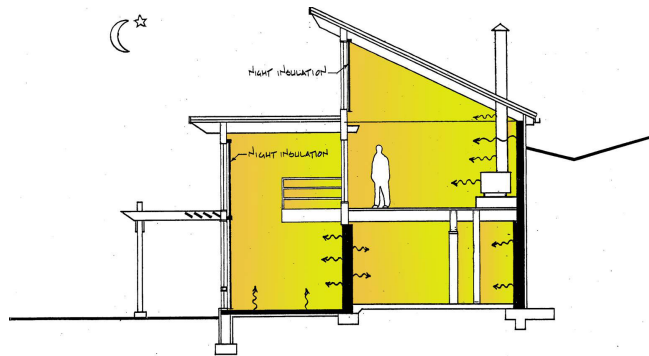


HELIOS PASSIVE SOLAR HOME



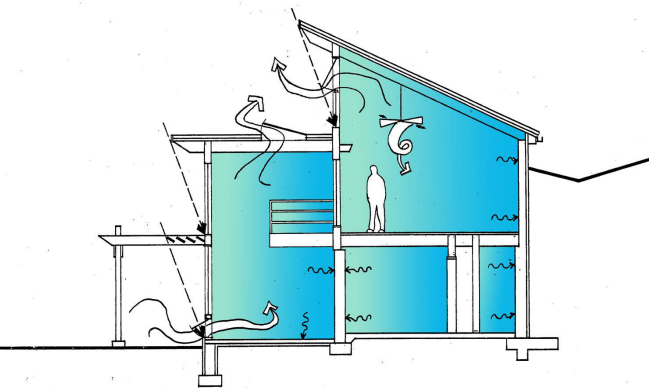
WINTER DAY

Direct solar gain to mass walls and floors.
Overhangs block out high summer sun.



WINTER NIGHT

Solar heat stored in mass walls and floors is re-radiated to the spaces.



SUMMER DAY

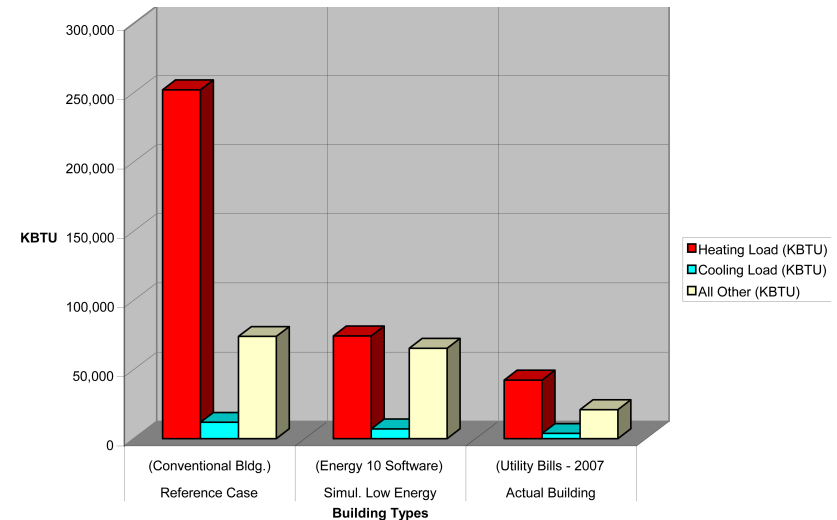
Natural convection induces warm air to rise and exit at high awning windows.

- Passive Solar
- Earth Sheltered
- 2-Story Sunspace
- Mass Walls & Floors
- Highly Insulated Thermal Envelope

This 3,173 sq.ft. home in Lafayette, N.J. achieves 80 percent energy savings over a similar sized conventional home due to the south facing insulated glazing, partial earth-sheltering, two-story sunspace, mass walls and floors, highly insulated thermal envelope, and solar hot water system.

SA SPECTOR ASSOCIATES ARCHITECTS
SUSTAINABLE BUILDING SOLUTIONS

19 Fox Hill Road
Lafayette, NJ 07848
973-579-3334
spectorarch@earthlink.net
www.spectorarch.com



ANNUAL ENERGY USE COMPARISON

Helios actual energy use compared with computer simulations of conventional and low-energy homes.